

SENTINELPRO™

SM-5040



Anti-Scald Thermostatic/ Pressure Balanced Shower Combination

□ SM-5040

SentinelPro shower system includes SentinelPro concealed anti-scald thermostatic/pressure balancing shower /bath valve & combinations. Chrome plated brass wall plate. Chrome plated metal lever handle. Adjustable temperature limit stop (TLS). Factory set @ 110 F°. Brass body with integral spring check stops. Dual element thermostatic/pressure balancing cartridge. Can be installed back to back. Roughing-in template. Four port valve with 1/2" female copper sweat inlets and shower outlet. 1/2" NPT female tub outlet.. Furnished with 1/2" pipe plug. Chrome plated brass supply ell with wall flange. 69" square lock stainless steel hose with rubber liner. Swivel connector. In-line vacuum breaker. 30" chrome plated brass slide bar with mounting screws. VS-100-AF handshower with flow control device reduces flow to 2.5 gpm/9.46 lpm maximum. Non-positive shut-off meets ICC/ANSI A117.1 SEC. 608.6 and ADAAG. Meets ASSE 1016 & ASME 112.18.1/CSA B125.1 standards.

Construction is Forged Brass Body and Glass Filled Resin Bonnet. Capacity is 4.0 GPM +/- .25 @ 45 psi (50/50 mix). Maximum Hot Water Supply Temperature is 185°F. Minimum Hot Water Supply Temperature is 5°F above set point. Maximum operating temperature is 125 psig. Valve Temperature Set Point is 110°F (Based on 115-120°F hot & 55 – 65°F Cold). Maximum Static Pressure is 125 psig. Minimum flow (for +/-3°F performance) meets 1016 to 1.5 gpm.

OPTIONS

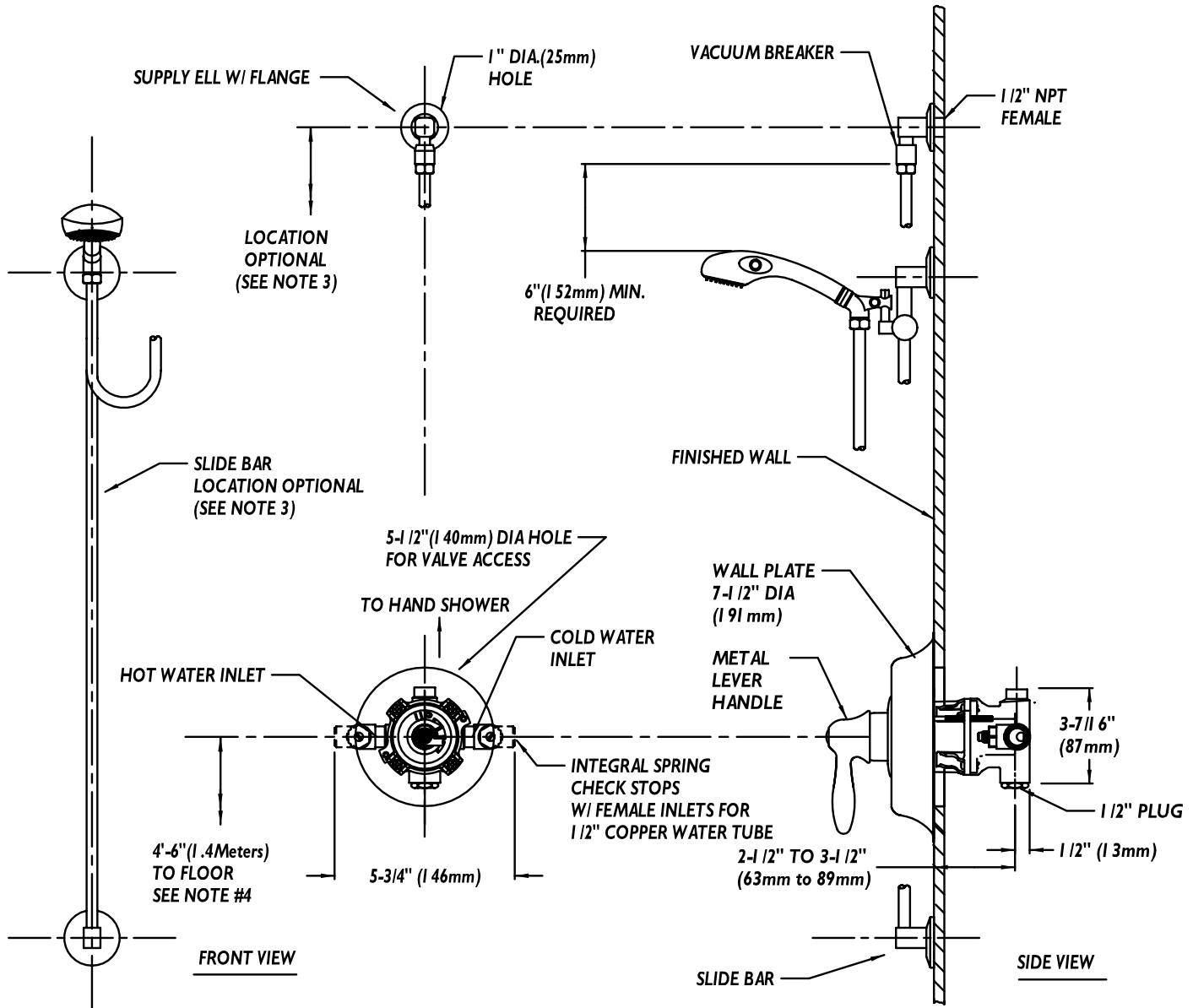
SUFFIX	DESCRIPTION
□ VH	Vinyl white hose (combo with handheld shower only)

This space for Architect/Engineer approval.



Rough-Ins

SM-5040



NOTE: 1. All dimensions are in inches (millimeters) unless otherwise specified and are subject to change without notice. 2. Unless otherwise specified all inlets and outlets are 1/2" female copper sweat. 3. The location of the slide bar and supply ell is optional, but restricted by the 69" hose length running from supply ell connection to hand shower and the 6" minimum requirement between the in-line vacuum breaker & top of hand shower. 4. For ADA mounting locations consult ADAAG, ANSI A117.1, or state regulations.