

## VERSATILE™

**SM-4450**



## Shower Combination

### **SM-4450**

Versatile shower system includes Sentinel Mark II® concealed anti-scald balanced pressure shower valve with integral volume control/diverter and integral stops and handheld spray combination. Chrome plated brass wall plate with decorative etched metal index. Chrome plated brass lever handle. Independent center sleeve allows up to 1" of rough-in variation. Adjustable temperature limit stop. Brass body. Pressure balancing and ceramic temperature regulating cartridge with built-in check valves. Four port valve with 1/2" female copper sweat inlets and shower outlet. 1/2" female NPT tub outlet. S-1554 chrome plated tub spout. In-line vacuum breaker. VS-100-AF handshower with flow control device reduces flow to 2.5 gpm/9.46 lpm maximum, to meet existing ASME A112.18.1/CSA B125.1 standard. Non-positive shut-off meets ICC/ANSI A117.1 SEC. 608.6 and ADAAG. 69" square lock stainless steel hose with rubber liner. Chrome plated brass supply elbow with wall flange. 30" slide bar with mounting screws. Swivel connector. Meets ASSE 1016 & ASME 112.18.1/CSA B125.1.

### **OPTIONS**

SUFFIX	DESCRIPTION
--------	-------------

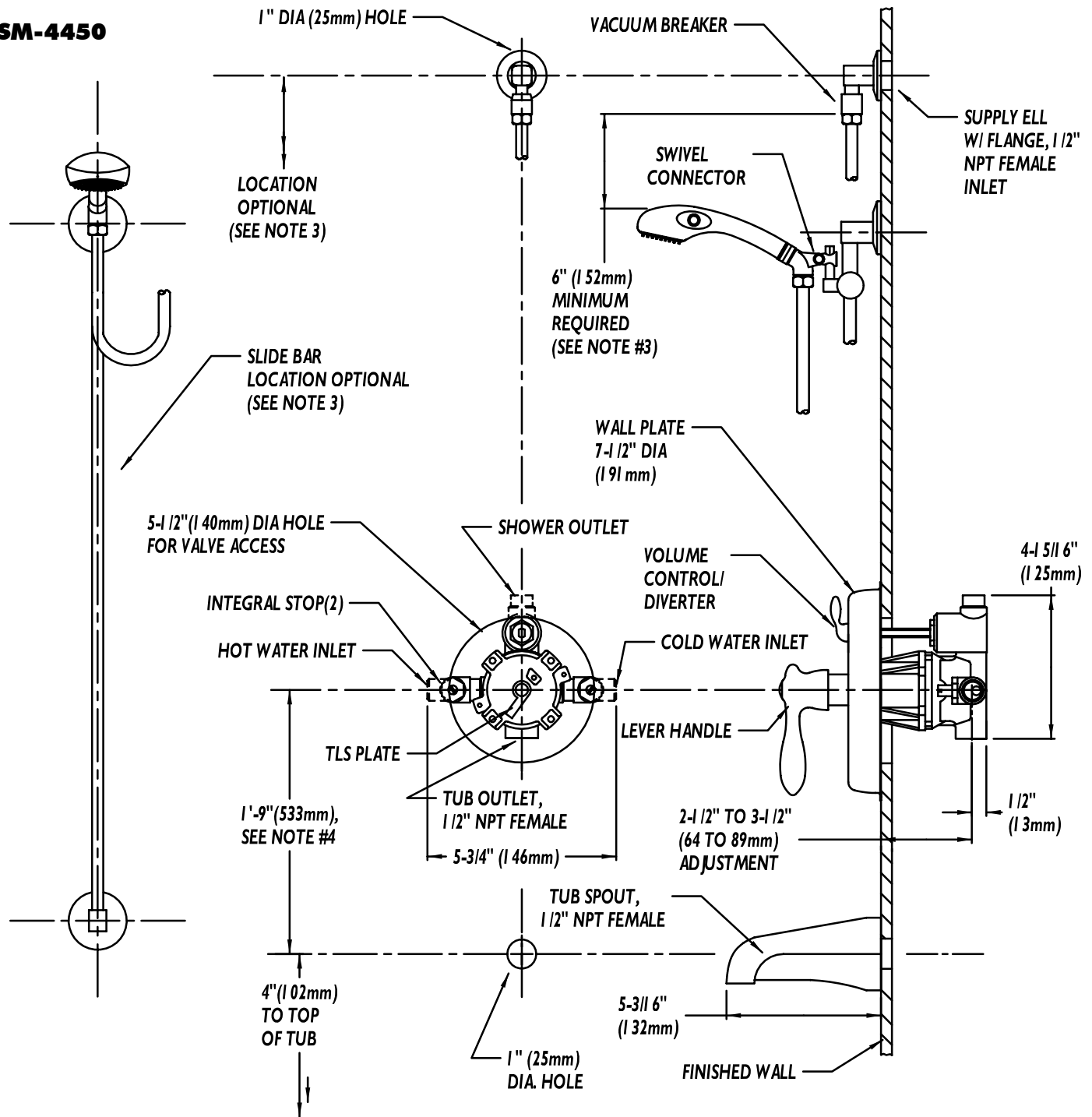
- |                             |  |
|-----------------------------|--|
| <input type="checkbox"/> PC | VS-100-PC handheld shower, chrome finish |
| <input type="checkbox"/> VH | 69" white vinyl hose                     |

This space for Architect/Engineer approval.



## Rough-Ins

**SM-4450**



NOTE: All dimensions are in inches (millimeters) unless otherwise specified and are subject to change without notice. Unless otherwise specified all inlets and outlets are 1/2" female copper sweat. The location of the slide bar and supply ell is optional, but restricted by the 69" hose length running from the supply ell connection to the hand shower and the 6" minimum requirement between the in-line vacuum breaker and top of the hand shower (hand shower adjusted to the highest position). For ADA mounting locations consult ADAAG, ANSI A117.1, or state regulations.