

## SENTINEL MARK II®

### Anti-Scald Balanced Pressure Shower & Bath

**SM-3030**



#### GENERAL SPECIFICATION

Sentinel Mark II concealed anti-scald balanced pressure shower and bath. Chrome plated brass wall plate with metal index. Chrome plated brass lever handle. Independent center sleeve allows up to 1" of rough-in variation. Adjustable temperature limit stop. Brass body. Pressure balancing & ceramic temperature regulating cartridge with built-in check valves. Can be installed back-to-back. Roughing-in template. Vandal-resistant standard. S-2272-E2 showerhead with flow control device reduces flow to 2.0 gpm/7.57 lpm maximum to meet existing ASME A112.18.1/CSA B125.1 standard. S-2500 shower arm and wall flange. S-1556 diverter tub spout. Four port valve with 1/2" female copper sweat inlets and shower outlet (tub outlet 1/2 NPT female). Meets ASSE 1016 & ASME 112.18.1/CSA B125.1 standards.

#### **SM-3030**

Anti-scald balanced pressure shower and bath.

#### OPTIONS

SUFFIX	DESCRIPTION
--------	-------------

- |                              |                                    |
|------------------------------|------------------------------------|
| <input type="checkbox"/> IS  | Integral stops                     |
| <input type="checkbox"/> LH  | Less showerhead                    |
| <input type="checkbox"/> 1   | S-2251 showerhead                  |
| <input type="checkbox"/> 2   | S-2252 showerhead                  |
| <input type="checkbox"/> 2VR | S-2252 vandal-resistant showerhead |
| <input type="checkbox"/> 3   | S-2253 showerhead                  |
| <input type="checkbox"/> 6   | S-2288 showerhead                  |
| <input type="checkbox"/> 9   | S-2292 showerhead                  |

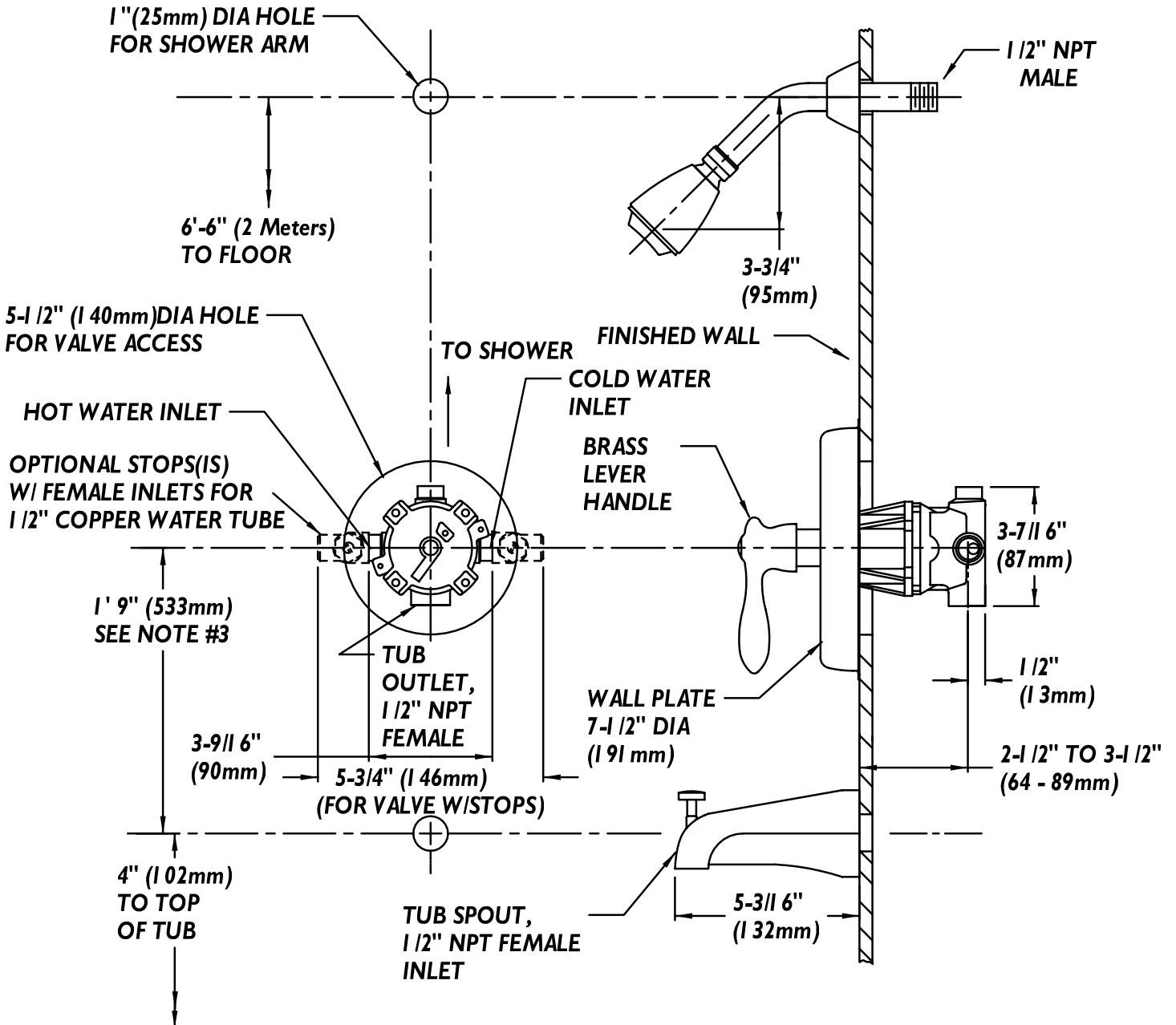
*Contractor packs available upon request.*

This space for Architect/Engineer approval.



## Rough-Ins

### SM-3030



NOTE: All dimensions are in inches (millimeters) unless otherwise specified and are subject to change without notice. Unless otherwise specified, all inlets and outlets are 1/2" female copper sweat. For ADA mounting locations consult ADAAG, ANSI A117.1, or state regulations.