

SENTINEL MARK II®

SM-2030

Anti-Scald Balanced Pressure Shower & Bath ♿

GENERAL SPECIFICATION

Sentinel Mark II concealed anti-scald balanced pressure shower and bath. Chrome plated wall plate. Chrome plated brass lever handle. Independent center sleeve allows up to 1" of rough-in variation. Adjustable temperature limit stop. Brass body. Pressure balancing & ceramic temperature regulating cartridge with built-in check valves. Can be installed back-to-back. Roughing-in template. S-2272-E2 showerhead with flow control device reduces flow to 2.0 gpm/7.57 lpm maximum to meet existing ASME A112.18.1/CSA B125.1 standard. S-2500 shower arm and wall flange. S-1556 diverter tub spout. Four port valve with 1/2" female copper sweat inlets and shower outlet (tub outlet 1/2 NPT female). Meets ASSE 1016 & ASME 112.18.1/CSA B125.1 standards.

□ SM-2030

Anti-scald balanced pressure shower and bath.

OPTIONS

SUFFIX	DESCRIPTION
□ IS	Integral stops
□ LH	Less showerhead
□ 1	S-2251 showerhead
□ 2	S-2252 showerhead
□ 2VR	S-2252 vandal-resistant showerhead
□ 3	S-2253 showerhead
□ 6	S-2288 showerhead
□ 9	S-2292 showerhead

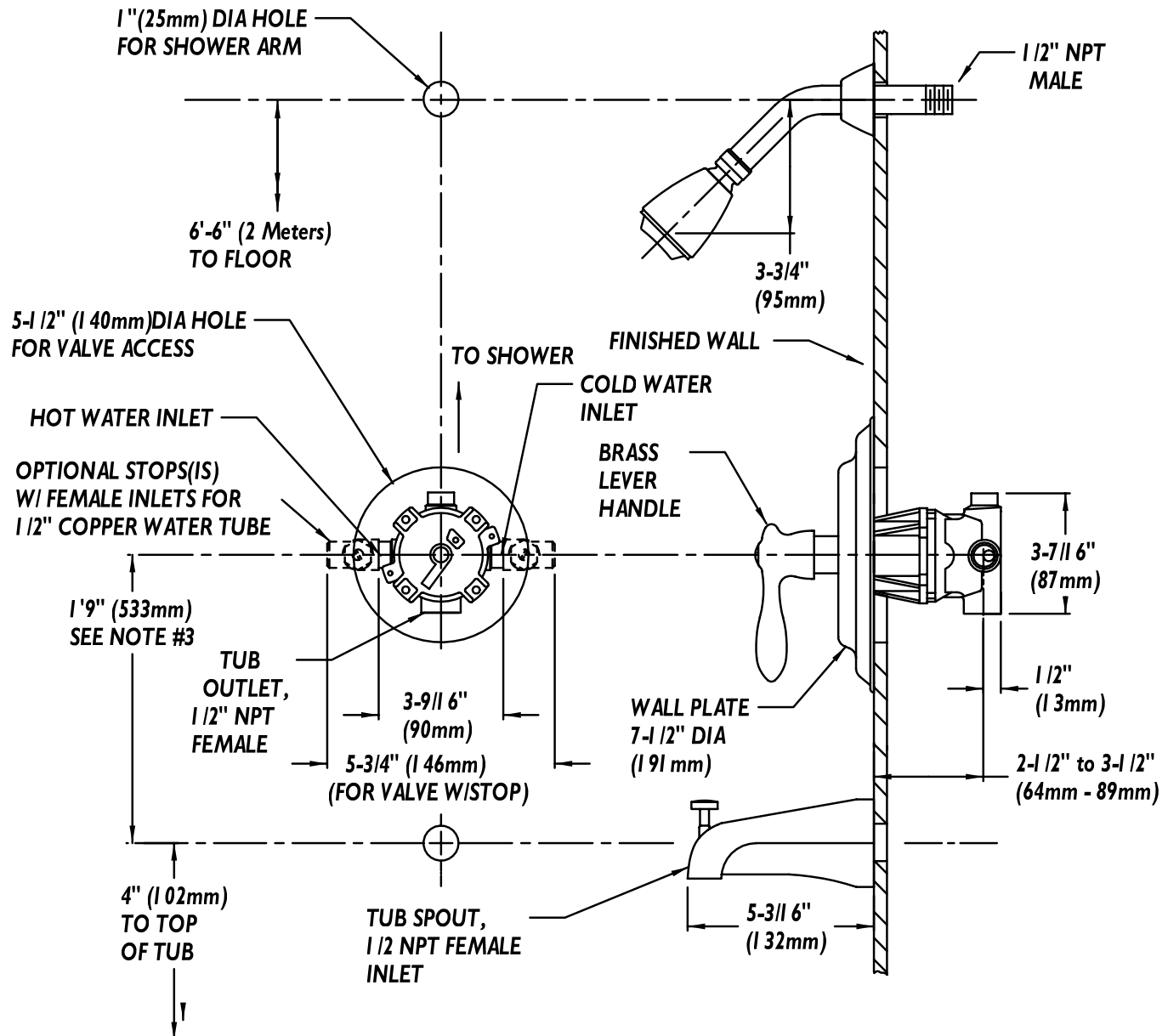
Contractor packs available upon request.

This space for Architect/Engineer approval.



Rough-Ins

SM-2030



NOTE: All dimensions are in inches (millimeters) unless otherwise specified and are subject to change without notice. Unless otherwise specified, all inlets and outlets are 1/2" female copper sweat. For ADA mounting locations consult ADAAG, ANSI A117.1, or state regulations.