

SPEAKMAN®

SE-580-ADA

EYESAVER® EYEWASH

DESCRIPTION

The SE-580-ADA Eyesaver® wall mounted eyewash features a plastic bowl, dual aerated spray heads with automatic flow controls and flip top dust covers. Unit designed for ADA accessibility.

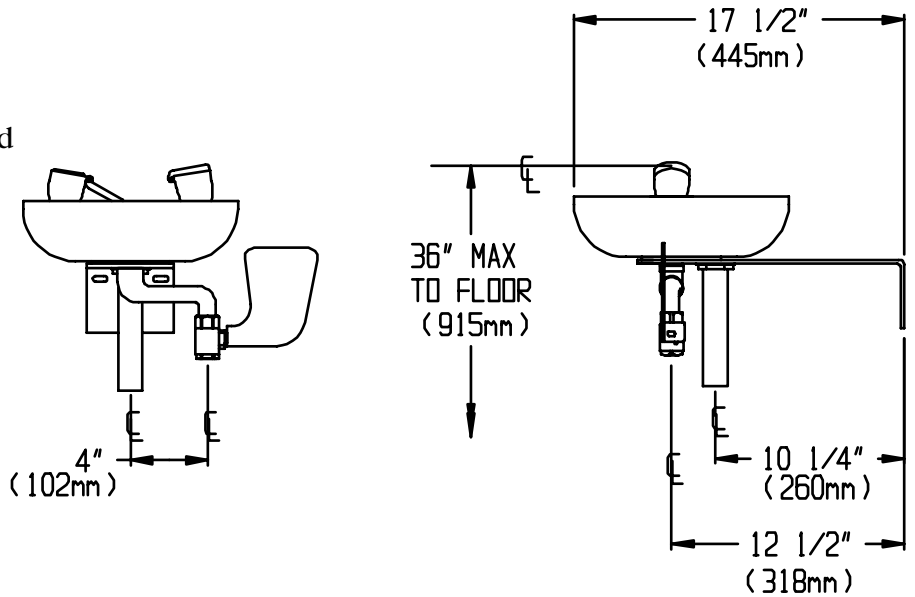
SPECIFICATIONS

- Bowl:** Yellow plastic
- Spray heads:** (2) aerated yellow plastic spray outlets with flip-top dust caps
- Valve:** 1/2" NPT female brass, chrome plated
- Activator:** Stainless steel push handle
- Inlet:** 1/2" NPT female
- Performance:** 3.6 gpm @ 30 psi
- Compliance:** ANSI Z358.1
- Universal Emergency Sign Included**



OPTIONS

- FPV Freeze protection valve
- SPV Scald protection valve
- FLW Flow switch
- HS Hand held spray
- PT P-Trap
- SSBV Stainless steel ball valve
- ILS In Line Strainer



Job Name _____	
Location _____	
Architect/Engineer _____	
Sales Representative _____	
Wholesaler _____	
Date _____	Model # _____