

# SPEAKMAN®

## SE-506

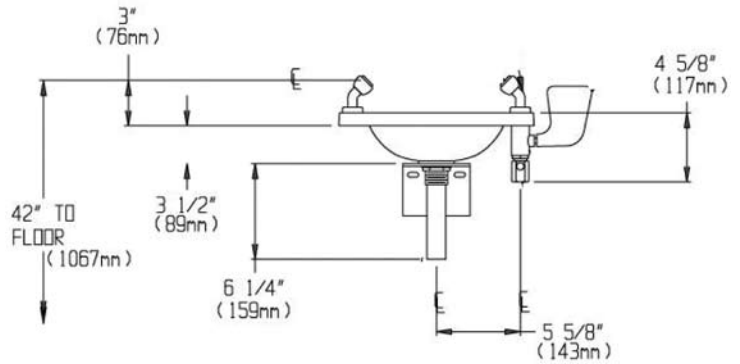
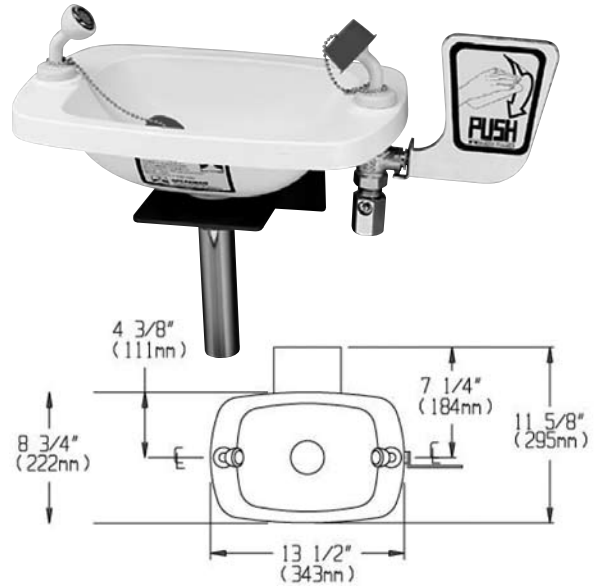
### EYESAVER® EYEWASH

#### DESCRIPTION

SE-506 Eyesaver wall mounted eyewash offers twin aerated sprays for gentle yet thorough rinsing of the eyes. The unit features a rectangular yellow Acrylic/PVC bowl and paddle handle activation.

#### SPECIFICATIONS

- Bowl:** Acrylic/PVC thermoplastic
- Spray Heads:** (2) yellow, plastic, aerated
- Valve:** ½" NPT female brass, chrome-plated
- Activator:** Stainless steel push handle
- Inlet:** ½" NPT female
- Performance:** 3.0 gpm @ 30 psi
- Compliance:** ANSI Z358.1
- Universal Emergency Sign Included**



#### OPTIONS

- FLW Flow switch
- FPV Freeze protection valve
- HS Hand-held spray
- ILS In-line strainer
- PT P-trap
- SPV Scald protection valve
- SSBV2 ½" stainless steel valve

Job Name _____	
Location _____	
Architect/Engineer _____	
Sales Representative _____	
Wholesaler _____	
Date _____	Model # _____