

COMMANDER®

SC-3062



SC-3062-REV



4" Centerset Lavatory Combinations

GENERAL SPECIFICATION

Polished chrome plated Commander 4" centerset lavatory faucet with 1/4 turn ceramic cartridges covered by a 25-year warranty. Accommodates installations up to 7/8" thick. Water conserving flow control reduces flow to 2.2 gpm/8.4 lpm. Meets ASME A112.18.1/CSA B125.1 and NSF61.

Lever Handle Models

Vandal-resistant lever handles with color-coded indexes.

- ☐ **SC-3062** Solid brass 1-1/4" pop-up drain
- ☐ **SC-3072** Strainer drain
- ☐ **SC-3072-LD** No drain assembly

Reverse Lever Handle Models

Vandal-resistant Reverse lever handles with color-coded indexes.

- ☐ **SC-3062-REV** Solid brass 1-1/4" pop-up drain
- ☐ **SC-3072-REV** Strainer drain
- ☐ **SC-3072-REV-LD** No drain assembly

OPTIONS

| SUFFIX | DESCRIPTION |
|-------------------------------|---|
| <input type="checkbox"/> CA** | Low lead for CA AB1953 compliance |
| <input type="checkbox"/> BO | 0.5 gpm flow control, vandal-resistant |
| <input type="checkbox"/> GB | 1.5 gpm flow control, vandal-resistant |
| <input type="checkbox"/> LD | Less drain assembly (SC-3062 & SC-3062-REV only) |
| <input type="checkbox"/> LF | 2.2 gpm laminar flow control outlet |
| <input type="checkbox"/> MI | Metal index for handles (Lever handles models only) |
| <input type="checkbox"/> VR | Vandal-resistant outlet device |

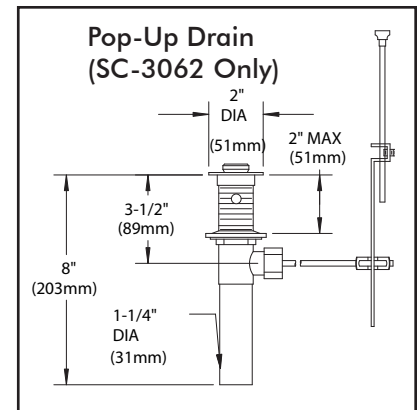
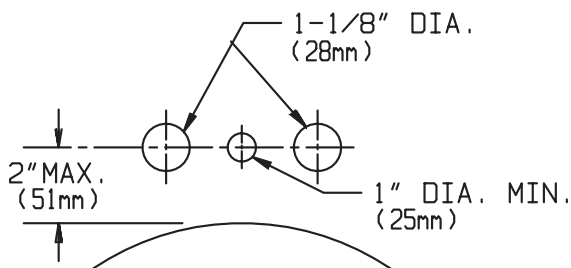
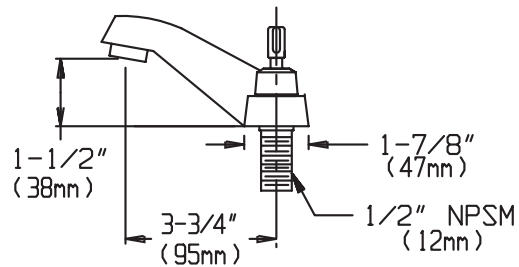
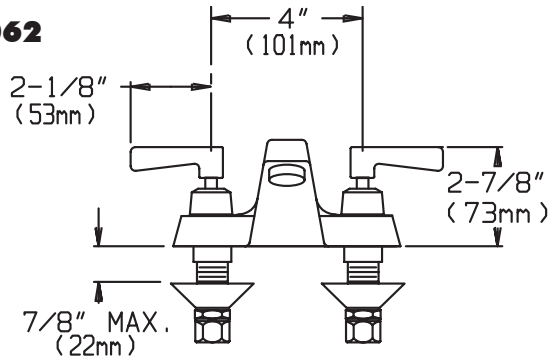
** The following options are not available with the "CA" option:
HS (Hose & Spray), SO, TWI, VB6, VB8, ST, SW, & TMV.

This space for Architect/Engineer approval.

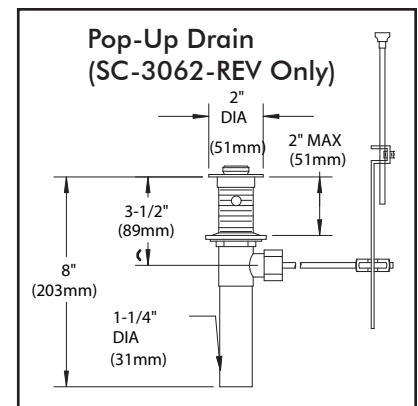
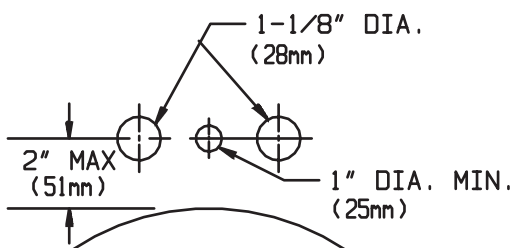
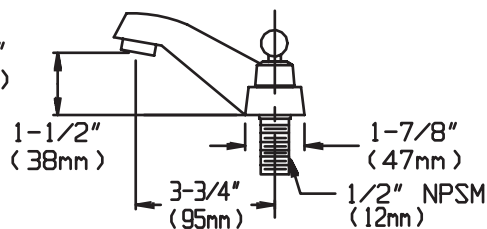
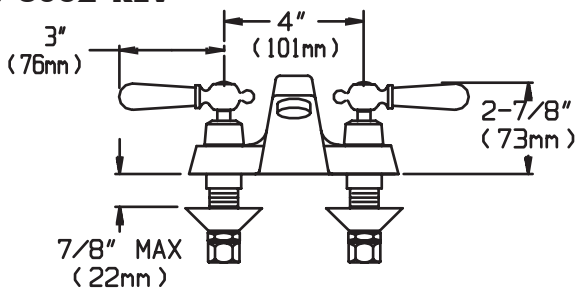


Rough-Ins

SC-3062



SC-3062-REV



NOTE: All dimensions are in inches (millimeters) unless otherwise specified and are subject to change without notice. Lavatory inlets are sized for either coupling or sweat connections. Unless otherwise specified, all inlets are 1/2" NPSM.