

SPEAKMAN COMPANY

S-9020 Installation, Operation & Maintenance Instructions

4" Centerset SENSORFLO® AC/ELECTRIC POWERED LAVATORY FAUCET

DESCRIPTION

Speakman SENSORFLO faucet. AC/Electric powered 4" centerset lavatory sensor faucet. Faucet body consists of polished chrome plated removable cover and black powder coated chassis. Sensor/electronics module with waterproof connectors housed above counter in the faucet body and powered by 120 Volt AC transformer. New two (2) inlet, one (1) outlet Solenoid design housed above counter in faucet body. Hot and Cold in-line filters housed above counter in faucet body. Vandal resistant 60 second time out feature. Water conserving vandal resistant recessed aerator reduces water flow to either 0.5 GPM/ 1.9 LPM or 2.2 GPM / 8.3 LPM to meet requirements of ASME A112.18.1/ CSA B125.1 standard for flow rates. ADA compliant. Note: 3/8" compression soft cone stainless steel flexible hoses are optional.

SPECIFICATIONS

TRANSFORMER: 120 VOLT AC
INLET SUPPLY: 3/8"

COMPRESSION
COPPER TUBING WITH MALE
THREADS

FLOW RATE: 0.5 GPM/ 1.9 LPM
OR 2.2 GPM / 8.3 LPM

SHIPPING WEIGHT: 6.5 LBS

OPTIONS

◇ HS- 2 stainless steel flexible hoses, 3/8" compression	◇ HTS- 1 stainless steel flexible hose for tempered water systems, 3/8" compression
◇ LF- vandal resistant laminar 2.2 GPM flow control	◇ PVD- polished brass top cover assembly
◇ LT- less transformer (for use w/ multi-unit transformers)	◇ TMV- under-counter thermostatic mixing valve with check valves
◇ VRS- vandal resistant screws with wrench	◇ GB- vandal resistant 1.5 GPM aerator outlet device

INSTALLATION

If the highest allowable flow is required, remove the standard 0.5 GPM aerator and install vandal resistant 2.2 GPM aerator with wrench provided. Carefully feed inlets of faucet through deck holes. Mount the faucet to fixture by fastening Mounting Brackets and Nuts to their respective Mounting Studs. Ensure gasket is properly seated on bottom of faucet chassis. Attach supplies to copper tube inlets using 3/8" compression fittings. DRY CONNECTIONS ONLY, DO NOT USE SEALANT. Carefully feed AC Cable with Flexible Metal Guard from faucet through deck hole of mounting fixture. Plug AC transformer unit into 120 VAC outlet and connect AC Cable with black plug on faucet to plug on the transformer. Remove cover from faucet body by unfastening the two (2) Allen screws located in the front of the unit with the Allen wrench provided. Set the tempered water temperature by adjusting the Temperature Adjusters to the Hot and Cold water lines. Verify the faucet cover gasket is properly seated before placing cover back onto the faucet body. Complete the closing of the faucet by refastening the two (2) Allen screws located in the front of the unit. With drain installed, turn on water and activate the faucet, checking for proper operation and all connections for leaks.

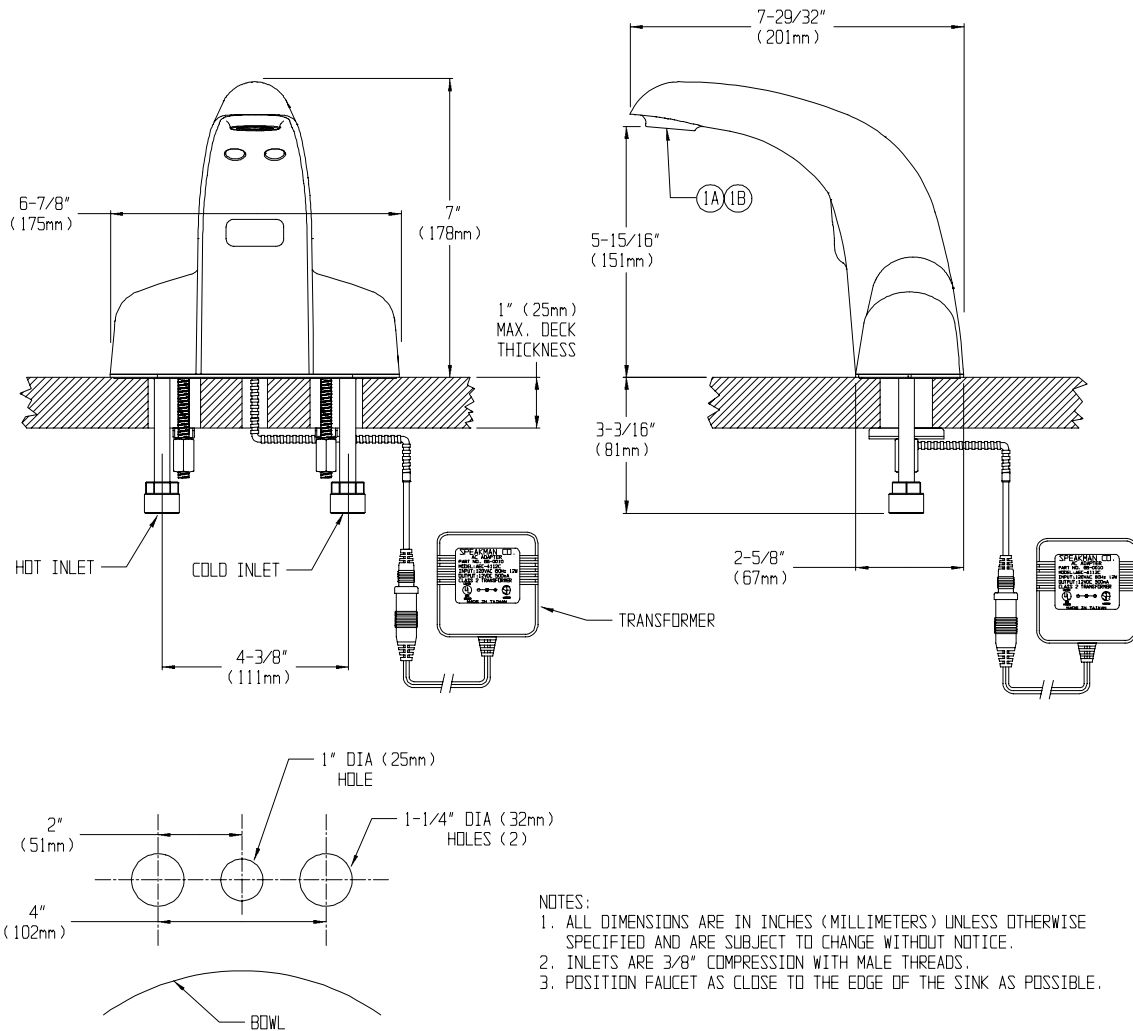
OPERATION

Speakman SENSORFLO faucets are thoughtfully designed for all in mind. Require no handles to turn, lift or push, water flows only when hands are in the lavatory basin. Built in vandal resistant circuitry shuts off the water after continuous flow of approximately 60 seconds. This feature prevents flooding; water is easily turned on again by placing one's hands under the lavatory spout.

MAINTENANCE (CARE & CLEANING)

Your SENSORFLO faucet is designed and engineered in accordance with the highest quality and performance standards. With proper care it will provide years of trouble free service. Periodically the faucet will require some minor maintenance to keep it performing at peak performance. Periodically check the solenoid filter for debris. If debris is present clean the filter thoroughly. The polished chrome finish of your faucet should be cleaned using mild soap and warm water. Dry immediately with a soft, clean cloth for best results.

ROUGH-IN MEASUREMENTS



REPAIR/REPLACEMENT PARTS

<u>ITEM NUMBER</u>	<u>PART/GROUP NUMBER</u>	<u>DESCRIPTION</u>
1A	RPG05-0674-PC	2.2 GPM AERATOR
1B	RPG38-0128-PC	0.5 GPM AERATOR
NOT SHOWN	RPG66-0044	SOLENOID FILTER SCREEN
NOT SHOWN	RPG76-0039	SOLENOID DIAPHRAM & O-RING REPAIR KIT
NOT SHOWN	RPG66-0165	MODULE WITH AC ADAPTER
NOT SHOWN	RPG10-0076	COVER WITH SCREWS (CHROME)
NOT SHOWN	RPG10-0076-PVD	COVER WITH SCREWS (PVD)
NOT SHOWN	RPG05-0791	TEMPERATURE ADJUSTING SPINDLES
2	RPG66-0010	TRANSFORMERS
NOT SHOWN	G05-0627	CHECK VALVES
NOT SHOWN	RPG07-0015	AC TO BATTERY CONVERSION KIT
NOT SHOWN	G20-1968	THERMOSTATIC MIXER

SPEAKMAN®

PO Box 191 Wilmington, DE 19899

Phone: 800-537-2107 Fax: 800-977-2747

Visit us on the web at www.speakmancompany.com

1/08
REV. 4
92-2528